

# SAMMAMISH

ISSUE 163

CITY NEWSLETTER

JAN. 2016

## 11,000 new residents test out city life!

THE CITY HOPES A “USER’S GUIDE” WILL HELP SMOOTH THE TRANSITION

Since the first tick of the clock on Jan. 1, the residents of Klahanie and several adjoining neighborhoods have been official residents of Sammamish.

But do they know how to operate a city? After years in unincorporated King County, is it possible there may be some municipal knobs and buttons they're not very well acquainted with?

To help with that, the city is folding an informal “user’s guide” into this newsletter, starting on page 2.

*See User’s Guide, pages 2-5*

“There are lots of different ways to connect with the city and make the system work,” City Manager Ben Yazici said. “We look forward to hearing from our new residents in the annexation area and helping them in any way we can.”

The new residents live in Klahanie, Brookshire Estates, Rainbow Lake, Summer Meadows and several other adjoining neighborhoods. With approximately 4,000 housing units and 11,000 residents spread over 2 square miles, the newly annexed area has raised Sammamish’s population to more than 60,000 people.



*Need help? Mona Davis and the rest of the city staff will be happy to assist with questions and concerns at City Hall.*



*Sammamish has a small city staff, but they're eager to hear from 11,000 new residents.*

**CITY USER’S GUIDE**  
*Page 2*

**FLOOD TIPS**  
*Story on page 6*

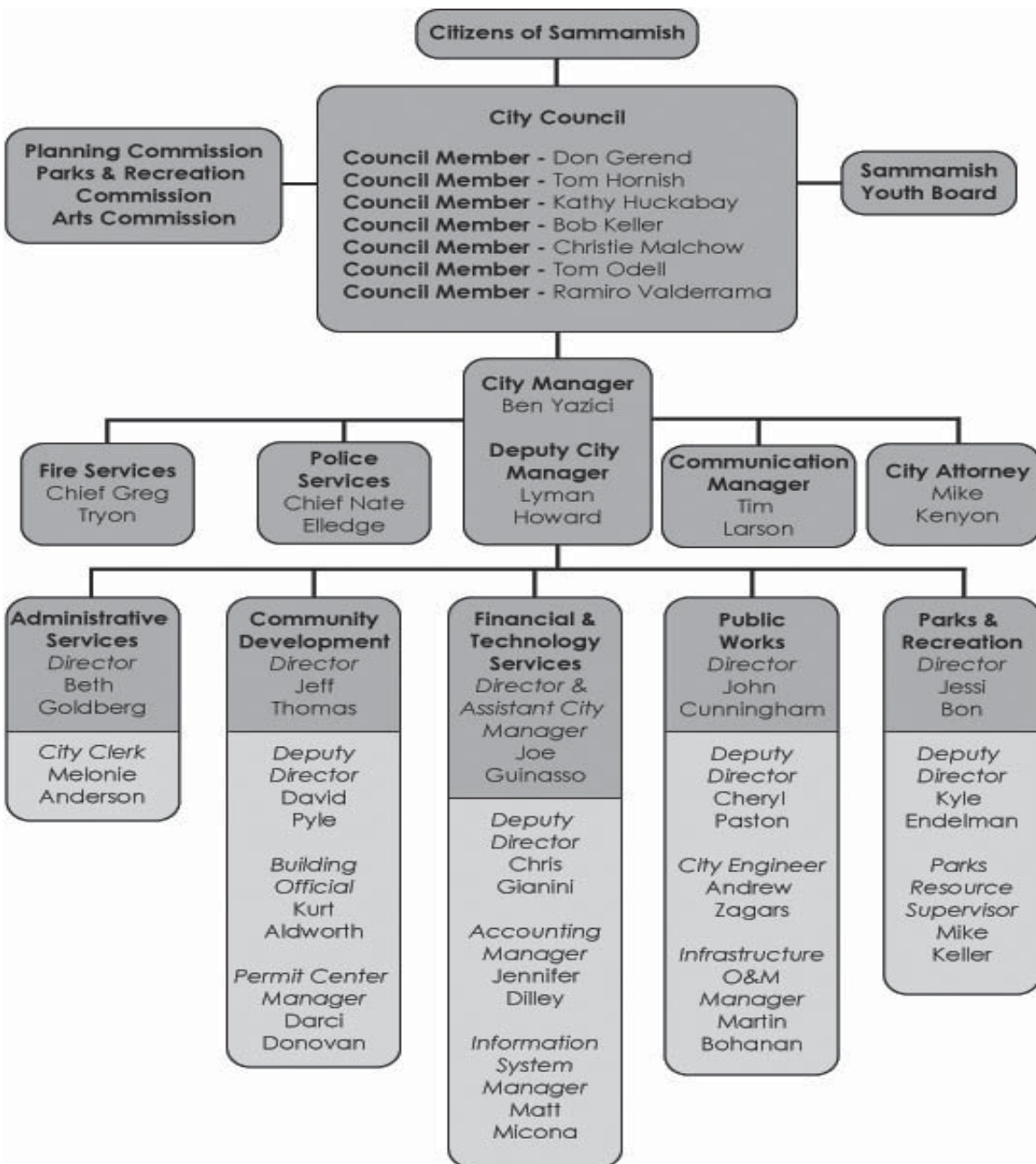
**VOLUNTEER!**  
*Story on page 7*

## City user's guide

### City Council/City Manager form of government

The city of Sammamish operates under a City Council/City Manager form of government. Residents elect the City Council; the City Council selects a city manager; the city manager hires staff and implements the broad policy goals of the City Council. In this system, the City Council

selects one of its own members to serve as mayor. The mayor, who serves a two-year term, runs the City Council meetings and works with the deputy mayor and city manager to organize meeting agendas, but leaves the day-to-day operations to the city manager.



## The City Council wants to hear your voice Here are just a few of your options:

- Attend a City Council meeting and speak directly to your elected officials during the public comment period.
  - Meet face to face during Council office hours on the first Tuesday of each month between 5 and 6 p.m.
  - Send an email. Contact information for each City Councilmember can be found below.
  - Present your opinions, questions and concerns at open houses, hearings and other public meetings.

### Contact information:

Main number at Sammamish City Hall – 425-295-0500

#### Councilmembers:

Don Gerend – [dgerend@sammamish.us](mailto:dgerend@sammamish.us)

Bob Keller – [bkeller@sammamish.us](mailto:bkeller@sammamish.us)

Tom Hornish – [thornish@sammamish.us](mailto:thornish@sammamish.us)

Christie Malchow – [cmalchow@sammamish.us](mailto:cmalchow@sammamish.us)

Kathy Huckabay – [khuckabay@sammamish.us](mailto:khuckabay@sammamish.us)

Tom Odell – [todell@sammamish.us](mailto:todell@sammamish.us)

Ramiro Valderrama – [rvalderrama@sammamish.us](mailto:rvalderrama@sammamish.us)

#### City staff:

City Manager – Ben Yazici – [byazici@sammamish.us](mailto:byazici@sammamish.us), 425-295-0550

Deputy City Manager – Lyman Howard – [lhoward@sammamish.us](mailto:lhoward@sammamish.us), 425-295-0552

Finance Director – Joe Guinasso – [jguinasso@sammamish.us](mailto:jguinasso@sammamish.us), 425-295-0590

Parks and Rec Director – Jessi Bon – [jbon@sammamish.us](mailto:jbon@sammamish.us), 425-295-0580

Community Development Director – Jeff Thomas – [jthomas@sammamish.us](mailto:jthomas@sammamish.us), 425-295-0520

Administrative Services Director – Beth Goldberg – [bgoldberg@sammamish.us](mailto:bgoldberg@sammamish.us), 425-295-0510

Public Works Director – John Cunningham – [jcunningham@sammamish.us](mailto:jcunningham@sammamish.us), 425-295-0570

City Clerk – Melonie Anderson – [manderson@sammamish.us](mailto:manderson@sammamish.us), 425-295-0511

Communications Manager – Tim Larson – [tlarson@sammamish.us](mailto:tlarson@sammamish.us), 425-295-0555

## How do I...

Call the police – Dial 9-1-1, just as you always have. For non-emergency calls to the Sammamish Police Department, dial 206-296-3311 during regular business hours.

Report a pothole – Call the Maintenance and Operations Center at 425-952-2115 or go to [www.sammamish.us](http://www.sammamish.us), find the QuickLinks tab in the upper, right-hand corner of the home page and click on Citizen Action Request.

Get a passport – The city processes passport applications on Wednesday and Thursday between 9 a.m. and 1 p.m.

Report a problem dog – The city contracts with King County Animal Control (206-296-7387).

Get a permit – Call the permit center at 425-295-0531 or, for smaller projects, go to [MyBuildingPermit.com](http://MyBuildingPermit.com). Full information on permits is available at [www.sammamish.us](http://www.sammamish.us) under the permit tab on the left side of the home page.

Reserve a sports field - Call the rental desk at 425-295-0730 between 9 a.m. and 1 p.m., Monday through Friday. To reserve a field or other city space online, go to [www.sammamish.us](http://www.sammamish.us) and click through “Departments, Parks and Rec, and Rental Application.”

Report a sign down – Call the Maintenance and Operations Center at 425-952-2115.

Report a problem after hours – Call the city’s after-hours emergency number (425-295-0700) between 3:30 p.m. and 7 a.m., Monday through Friday, or any hour of the day on weekends. This is NOT a replacement for 9-1-1.

*When in doubt, call the main City Hall number at 425-295-0500 and ask for help.*

## Things you should know...

- Roofs – Permits ARE required for new roofs unless: (1) You are just adding another layer of the same kind of roofing that’s already in place (two layers total allowed), or (2) You are just replacing individual shingles.
- Signs – The placement of signs in the city’s right-of-way is regulated. Please contact code compliance (425-295-0526) with questions before purchasing signs for your organization or event.
- Trees – Please contact the city (425-295-0500) prior to removing trees. Significant penalties may apply for tree removal without permits.
- Setbacks – No structures, including mechanical components, are allowed in required setbacks, unless a mechanical agreement letter signed by the adjacent property owner is recorded with the county. Check with the planning department (425-295-0500) for site-specific information.
- Structures – Sheds cannot be placed in setbacks. Sheds over 200 square feet require a permit.
- Junk vehicles – They are not allowed. Vehicles must be properly licensed and parked on impervious surfaces.
- Fireworks – It’s illegal to sell or use fireworks inside Sammamish city limits.
- No address change required – Your zip code and street address remain the same. Your mail will arrive as usual.

*Building Permit Resources link: <http://www.sammamish.us/permits/BuildingPermits.aspx>  
Permit Center hours: Monday-Friday, 8:30 a.m. to 4 p.m. – Permit questions: 425-295-0531*

## How do I stay informed?

**City newsletter** – This once-a-month, hard-copy newsletter goes to every residential mailbox in the city. It publicizes meetings, describes projects, announces special events and provides background information on major issues facing the city.

**City website** – Go to [www.sammamish.us](http://www.sammamish.us) and navigate to your preferred topic from the home page. The city is planning to give the website a major overhaul in the near future.

**Sammamish 21 TV** – Channel 21 (Comcast) carries City Council and Planning Commission meetings.

**AM 540 Radio** – As needed, this emergency radio system broadcasts alerts on weather, traffic and other emergencies.

**Email Alerts** – Residents can sign up for the latest news on City Council meetings, road projects, special events, or any other topic of interest. Just go to the city website and click on the “email alert” icon in the upper, right-hand corner of the home page.

**Emergency Text Alerts** – Receive instant notifications on your cell phone when traffic, weather or other emergencies develop. Just go to the city website and click on the “email alert” icon in the upper, right-hand corner of the home page.

**Facebook** – The Parks and Rec Department, Arts Commission and Police Department all employ Facebook.

**Special mailings** – The city often communicates with specific neighborhoods when they’re impacted by a new project.

**Parks and Rec Guide** – This one-stop-shopping guide for public and private recreation opportunities is published three times a year. It’s folded into the city newsletter in April, August and December.

**Budget in Brief** – After each biennial budget is approved, the city puts out a “Budget in Brief.” Folded into a city newsletter, this easy to understand summary, full of charts, tables and pictures, gives residents a clear picture of where their tax dollars are going. Detailed, comprehensive budget documents are available online at [www.sammamish.us](http://www.sammamish.us).

## City events and special occasions...

Summer Concerts in the Park  
Fourth on the Plateau  
Farmers Market  
KidsFirst! Series  
Shakespeare in the Park  
Sammamish Days  
Rig-a-Palooza  
TeenFest  
Nightmare at Beaver Lake  
Very Merry Sammamish

*(Keep reading this city newsletter  
for times and dates)*



*Fun and fireworks at the Fourth on the Plateau!*

## Arts Commission adds sculpture to City Hall

In the middle of the City Hall foyer, there's a tall concrete pillar. Its purpose – to hold up a staircase leading to the second floor. But now, thanks to the Sammamish Arts Commission, it's been repurposed – as a pedestal for a permanent piece of public art.

The piece, called “The One Who Reached the Star,” is a brushed and powder-coated steel sculpture depicting a flight of four birds. The highest flyer of the bunch is touching a star with its beak.

The sculpture, made for this specific perch by Michele Van Slyke of Bainbridge Island, was purchased by the Arts Commission for \$1,500.

There is a lot more art from Van Slyke throughout the foyer. As part of a display that will run through Jan. 15, she and her artist husband, Kent Van Slyke, have loaned numerous pieces for public viewing. The City Hall foyer is open during normal business hours.



**Michele Van Slyke**

*The One Who Reached the Star, 2015*

Brushed and powder-coated steel,  
gold leaf

40 x 30 x 16 inches

## If the roadways flood, please follow these tips

**Always obey road-closed signs** – No matter where you are or what the emergency, the road has been closed to protect your life and property. The problem beyond the sign could be anything from flooding to a sinkhole to a live power line across the road. One thing is for certain – city officials have determined, after careful consideration, that the problem is severe enough for the road to be closed.

**Locate and plan another route to your home** – In the event that the route you typically take to and from home could be blocked, take the time to plan an alternative route to your home.

**Be wary of pedestrians and children** – When driving through large puddles, slow down and be aware that

you might accidentally splash and drench nearby pedestrians. Keep in mind that there is also a chance of injury, particularly to children, during periods of heavy rain.



**Heed water over the roadway warning signs** – Slowing down when there is water on the road can help prevent you from hydroplaning and potentially losing control of your vehicle.

**Practice patience and understanding** – We are all fortunate enough to live in the lush Pacific Northwest and are occasionally impacted by significant rain and wind storms, so remember to keep things in perspective. A road closure or a power failure can be very troublesome, but they'll likely be distant memories by tomorrow.

# CITY CALENDAR

## JANUARY

*Tuesday, Jan. 5*

-City Council Meeting,  
6:30 p.m.

*Wednesday, Jan. 6*

-Parks and Rec Commission Meeting,  
6:30 p.m.

*Tuesday, Jan. 12*

-City Council Special Meeting,  
6:30 p.m.

*Thursday, Jan. 14*

-Planning Commission Meeting,  
6:30 p.m.

*Thursday, Jan. 14 - Saturday, Jan. 16*

-City Council Retreat,  
8 a.m.-5 p.m.  
Hotel Murano, Tacoma

*Monday, Jan. 18*

-Volunteer at Lower Commons Park,  
10 a.m.-1 p.m.

*Tuesday, Jan. 19*

-City Council Meeting,  
6:30 p.m.

*Wednesday, Jan. 27*

-Sammamish Youth Board Meeting,  
6-7 p.m.

*Thursday, Jan. 28*

-Planning Commission Meeting,  
6:30 p.m.

## FEBRUARY

*Tuesday, Feb. 2*

City Council Meeting,  
6:30 p.m.

*Wednesday, Feb. 3*

Parks and Rec Commission Meeting  
6:30 p.m.

*Thursday, Feb. 4*

Planning Commission Meeting  
6:30 p.m.

*Tuesday, Feb. 9*

City Council Study Session, 6:30 p.m.

*Monday, Feb. 15*

Presidents' Day  
City offices closed

*Tuesday, Feb. 16*

City Council Meeting, 6:30 p.m.

*Thursday, Feb. 18*

Planning Commission Meeting,  
6:30 p.m.

*Monday, Feb. 22*

Arts Commission Meeting,  
6:30 p.m.

### PLEASE NOTE:

All meetings and events at City Hall, unless otherwise noted. Times, dates and locations are subject to change. Please consult the city website for the most current information.

## Volunteer on MLK Day!

You have two opportunities to help your community  
on  
**Monday, Jan. 18, Martin Luther King, Jr., Day**

Help restore the Lower Commons Wetland!  
Enhance the habitat by planting and mulching native trees and shrubs while also removing invasive plants.  
10 a.m. to 1 p.m.

Work with the Washington Native Plant Society as they work to restore Ebright Creek by removing invasive weeds and planting native trees and shrubs.  
Noon to 3 p.m.

Water, snacks, gloves and tools will be provided!  
To register, go to [www.sammamish.us](http://www.sammamish.us)  
and click on the "Volunteer" tab.

## Eastside Friends of Seniors takes the baton from Sammamish Cares

In 2011, Sammamish Cares was created in response to calls for help from residents who needed help maintaining their property or home. It came to life with the support of the Sammamish Kiwanis, Sammamish Rotary, Faith in Action, Habitat for Humanity Eastside, and the Brush of Kindness program.

Now, to consolidate resources and streamline support efforts, these calls for help will go through Eastside Friends of Seniors. This volunteer-based organization provides services to people 60 years of age or older who need help to remain independent in their homes.

The service area for Eastside Friends of Seniors includes greater Issaquah, Sammamish, and parts of Bellevue and the Snoqualmie Valley.

To find out about volunteer opportunities and services, go to [www.eastsidefriendsofseniors.org](http://www.eastsidefriendsofseniors.org).



801 - 228th Avenue SE  
Sammamish, WA 98075

PRSR STD  
U.S. POSTAGE PAID  
REDMOND, WA  
PERMIT NO.312

ECRWSS

POSTAL CUSTOMER

## SAMMAMISH CITY COUNCIL



*Tom Hornish*  
Councilmember



*Kathy Huckabay*  
Councilmember



*Don Gerend*  
Councilmember



*Bob Keller*  
Councilmember



*Tom Odell*  
Councilmember



*Ramiro Valderrama*  
Councilmember



*Christie Malchow*  
Councilmember

# Toys for Tots!



Detective Amy Jarboe stands behind a pile of new gift items donated by generous Sammamish residents. Jarboe has headed up the local Toys for Tots effort for ten straight years. Thanks, Amy!

## CITY OF SAMMAMISH OFFICES

801 228th Ave. SE, Sammamish, WA 98075  
Phone: 425-295-0500 • Fax: 425-295-0600

[www.sammamish.us](http://www.sammamish.us)

**Tom Hornish, Councilmember**  
thornish@sammamish.us  
**Kathy Huckabay, Councilmember**  
khuckabay@sammamish.us  
**Don Gerend, Councilmember**  
dgerend@sammamish.us  
**Bob Keller, Councilmember**  
bkeller@sammamish.us  
**Tom Odell, Councilmember**  
todell@sammamish.us  
**Ramiro Valderrama, Councilmember**  
rvalderrama@sammamish.us  
**Christie Malchow, Councilmember**  
cmalchow@sammamish.us

Ben Yazici	City Manager
Lyman Howard	Deputy City Manager
Jessi Bon	Parks & Rec Director
Beth Goldberg	Admin Services Director
Joe Guinasso	Finance Director
Jeff Thomas	Community Dev Director
Melonie Anderson	City Clerk
Nathan Elledge	Police Chief
Greg Tryon	Fire Chief
Michael Kenyon	City Attorney

*Newsletter suggestions or concerns?*  
**Contact Communications Mgr Tim Larson**  
425-295-0555, [tlarson@sammamish.us](mailto:tlarson@sammamish.us)