



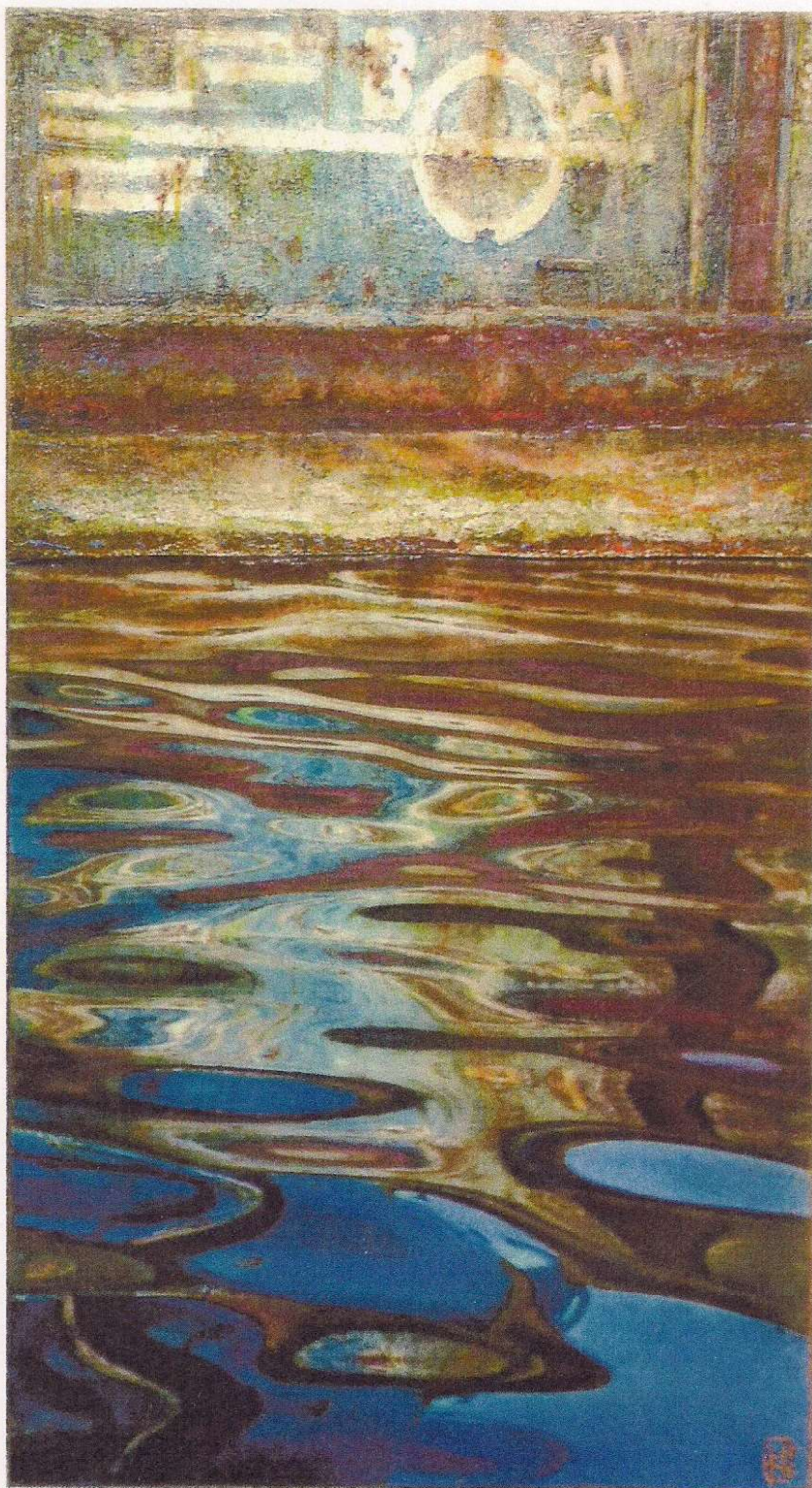
2011 "Two Canoes", 9 piece photo/painting by Kathy Hastings

Sammamish Arts Commission
is pleased to present:



WaterLines

The work of Kathy Hastings



June 8 - August 31, 2011

Opening Reception

Wednesday, June 8, 2011
6:00 - 8:00 pm

Musical offerings
provided by
Master Chorus Eastside

**Sammamish City Hall
Commons Gallery**
801 228th Avenue SE
Sammamish, WA 98075

Hours: Weekdays 8:30am - 5:00pm

For directions and more information:
www.ci.sammamish.wa.us

Sponsored by:



New art show opens at City Hall

By Anna Marum

"Once upon a time a high school teacher gave me the assignment to find how math and art were alike. The assignment intrigued me, and I've been fascinated with the question ever since."

This may not sound like a typical artist, and rightly so, because Kathy Hastings is anything but typical.

The Snohomish resident, whose work will be featured in City Hall this summer, began creating water-related art with photos of conch shells.

Her love of the mathematical phenomena found in spirals, the Golden Ratio (the comparison between the length of the sides of a rectangle) and Fibonacci sequences (a series of numbers where each number is the sum of the two immediately prior to it) intrigued her and drove her choice of subjects for her pieces.

Hastings was first attracted to conch shells in



Art by Kathy Hastings

"Flight" is a photo/encaustic based on a photo of the ship Mauna Kea

2003 while in the Caribbean. The shells were strewn across the beach at Grand Turk and she began photographing them.

Then she began combining the digital imagery with painting.

See ARTIST, Page 13

Artist

Continued from Page 12

The artist started experimenting with the images in Photoshop and was fascinated with the possibilities of combining traditional painting techniques with digital imagery, she said.

She was also fascinated by the conch shell.

"The spiral symbol itself is a symbol of growth, she said. "I don't think we grow in a straight line. I think we come round and round to things we know, but each time we come around we have changed a little."

Since 2003, the artist's work has gradually changed from the spiral conch shells to nautical images when Hastings began kayaking around the fishing boats in Salmon Bay.

She would weave through the vessels in the public and commercial marina.

She likes to go early in the morning or late in the afternoon when the light is golden, she said.

"Every time I take the kayak out it's like an Easter egg hunt," she said. "I never know what I'll find, what boat has been moved, what boat has come in, how still or rough the water will be, how the sky and boats will reflect in the water. I love it."

There are also several pieces from a series called "Intersections and Crossings." For this series, Hastings limited herself to perpendiculars she found in the hulls - paint drips, welds and scrapes.

"I think I used these to work out some of my questions about faith and death," she said. "I wasn't purposely going after the Christian cross. Like the spiral, I was looking for the bigger concept."

Sammamish Arts Commissioner Barbara Jirsa said the commission chose to exhibit Hastings' artwork because the artist's local inspiration for pieces is particularly fitting for summer.

Jirsa said the natural elements in the artist's pieces make her a perfect fit for the summer exhibit, entitled "Waterlines."

"She's an amazing artist," Jirsa said. "She's done a really great job of capturing what it is that draws her to this work."

Jirsa said she is looking forward to the exhibit, which was

installed in the Commons Gallery June 6.

"It's a great space and I think artists enjoy having their work shown there," she said.

Hastings' artwork will be showcased through late August. Jirsa said the gallery gets a lot of traffic and she hopes the pieces will start a community conversation.

"It's a wonderful opportunity to anyone who walks into the City Hall," she said. "And I think the content is really appropriate for the summer," she said. "I think people will enjoy her work ... it's reasonably priced."

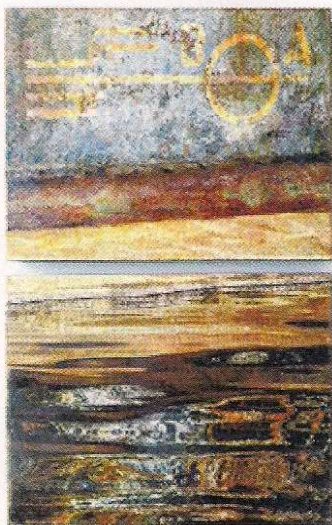
An opening reception will be held in conjunction with the farmers market from 6-8 p.m. June 8 in the Commons Gallery. Master Chorus Eastside will provide musical interludes. The reception is free to the public.

Intern Anna Marum can be reached at samrev@isspress.com. To comment on this story, visit www.SammamishReview.com.



Photo by Indy Behrendt

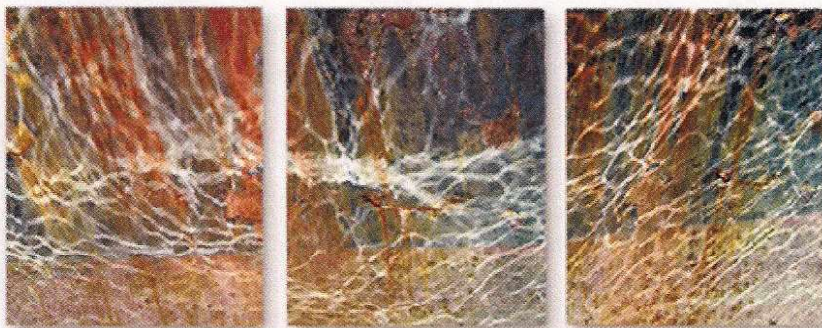
Kathy Hastings at work in her studio in Snohomish.



Salmon Bay Diptych
2 16" x 20"



Blue Moon
photo/encaustic
2 - 16" x 20"



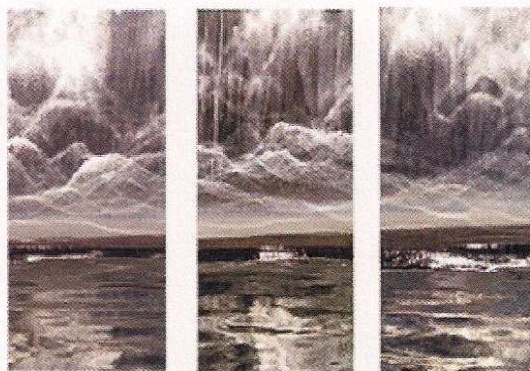
Dancing Light 3 16 x 20



Plimsoll Triptych
3 - 11x14



Verdant Landing
2 - 16" x 20"



Haiku Forming 3 - 9 x 21



Salmon Bay Plimsoll
Blue Tones
(Hopefully done by June 6)



Amber Band 32 x 18



Tangerine Band 12x20



Light Pearls 12x20



Streak of Cadmium 12x20



Ethereal 12x20



Stripes 12x20



Black Gold 12x20



Ochres 12x20



the Naming the Named



the End the Beginning



the Burden the Release



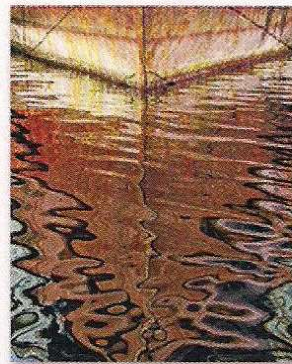
the Finite the Infinite II



the Longing the Love



the Questions the Answer



*the Changing the Changeless
(hopefully done by June 6)*



the Worn the Restored

Kathy Hastings

dkstudios@aol.com
www.kathyhastings.com
425.335.4529
360.920.6634



Two Canoes –9 panels, 11x14"



Flight – 24 x 48"



Water Chants –9 panels, 11x14"



Rust with Dignity—9 panels, 10 x 10"panels

12 months of Bowls
for the upstairs.

13" x 19"



Textures of Time II, 15 x 18