

- [Email \(HTML\)](#)
- [Email \(Plain Text\)](#)

From: City of Sammamish <sammamish@service.govdelivery.com>

Subject: City News, Events & Updates: Your weekly eNews from the City of Sammamish

King County Flood Warning in Effect



City Calendar

January 11, 2022 | [City Council Study Session](#)

January 12, 2022 | [Parks and Recreation Commission Meeting](#)

Current City News and Information

[Flood Warning in Effect](#)

[First Sammamish City Council Meeting of 2022](#)

[Update on Republic Services, Snow and Ice Operations, and City Parks from City of Sammamish's Public Works](#)

[Winter Weather Updates and Resources](#)

[Department of Health updates isolation and quarantine guidance to align with CDC recommendation](#)

[King County Growth Management Council to revisit Sammamish's Housing Units Growth Target](#)

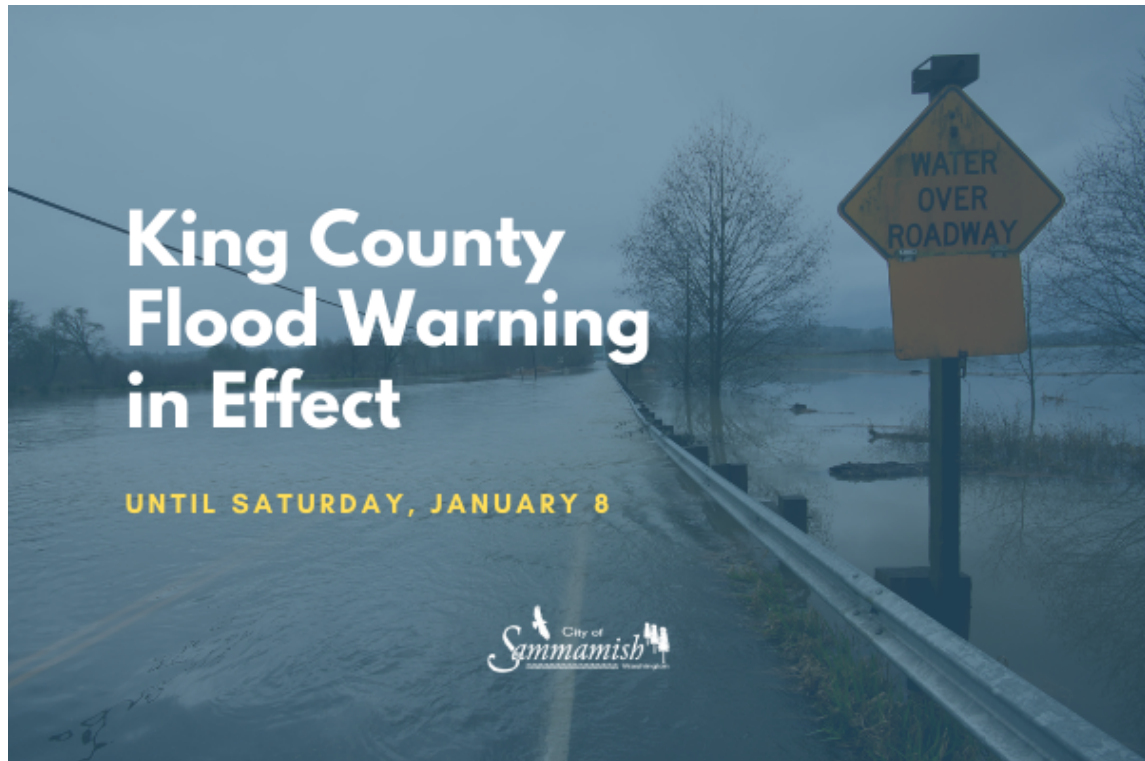
[Four-month closure of westbound SR 520 on-ramp from Redmond Way/SR 202 starting in February 2022](#)

[Sammamish City Hall Re-Opening Plan](#)

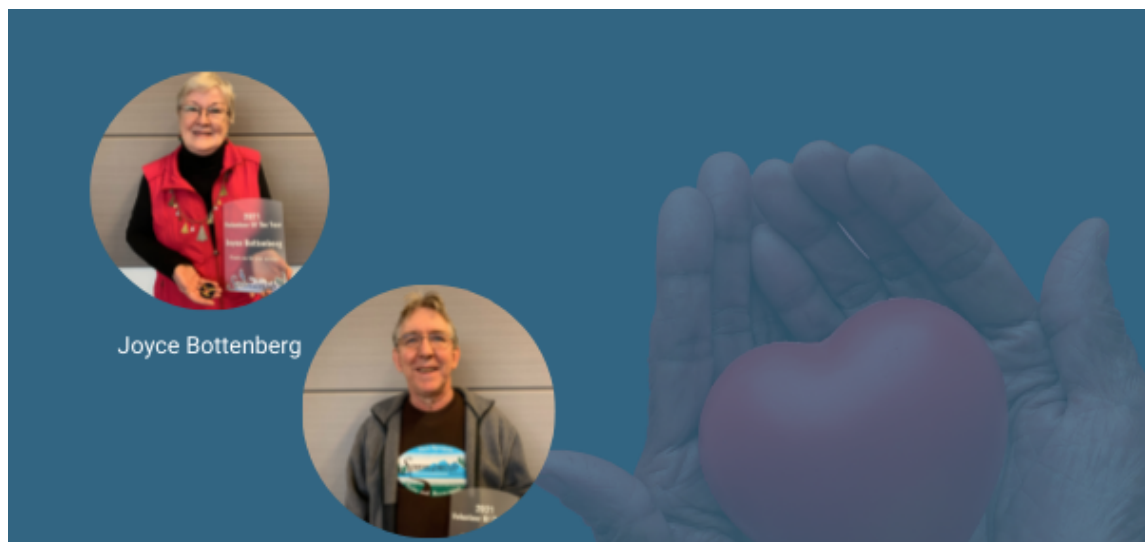
To book the *Community Van* or *Community Ride*, please visit [Connect Sammamish's Mobility Hub](#)

For COVID-19 updates, visit [COVID-19 information hub](#)

For weather-related events and *Wildfire Awareness, Prevention and Safety Tips*, visit [Weather Event News and Updates](#)



There is a Flood Warning in effect for all of King County until Saturday, January 8. Reports of water over the roadway will be posted to the City's [Weather Events News](#) page, which you can access by clicking on the image.



Steve Marple



Sammamish's 2021 Volunteers of the Year

Volunteerism is ingrained in our community. We appreciate the tremendous work our community volunteers do for our City. Join us in honoring Sammamish's 2021 Volunteers of the Year Joyce Bottenberg and Steve Marple 🏆🏆🏆🏆🏆

Keep reading about their lives of volunteerism by clicking on the image!

A collage of seven diamond-shaped photographs showing various volunteer activities: a group of people with tools, a person working with a wheelbarrow, a group of people in a wooded area, hands stacked together, a person planting a seedling, a group of people in safety vests, and a group of people cheering.

Martin Luther King Jr. Day Volunteer event at East Sammamish Park

Join Master Stewards from the [Washington Native Plant Society](#) and the City this MLK national day of service to help remove invasive species and mulch at East Sammamish Park. Give back to your community, learn about native plants and enhance wildlife habitat!

This project is perfect for students looking to complete community service hours for school. Water, snacks, gloves and tools will be provided. Please dress appropriately for weather, wear long sleeves/pants and closed-toed shoes. If the weather report predicts rain bring along a rain coat.

Masks are required to wear when on site and working. Social distancing will be enforced while working.

Must register and sign agreement online. No walk ups and only limited number

must register and sign agreement online. No team ups and only limited number of volunteers at a time is allowed. To register, please click on the image!



❄️ **Sammamish Police Department is participating in the Polar Plunge to raise funds and awareness for Special Olympics Washington!** ❄️

This is a great fundraising event in support of more than 19,500 Special Olympics Washington participants. This year, we're facing off in a friendly East vs. West competition to see which side of the state can raise the most funds.

Show your support by clicking on the image!



Saturday, February 5, 2022
1:00 PM — 3:00 PM
Sammamish Commons Plaza

OUTDOOR EVENT
Dragon and Lion Dance
Performances by Local Artist
Martial Arts Demonstrations
Educational Booths
Raffles
Asian Food Truck

MASKS REQUIRED
to attend the event

Join us in celebrating the Year of the Tiger, featuring the diversely talented international community of Sammamish and activities centered around Asian culture and ceremonial traditions. Event highlights include a vibrant performance by the [International Lion Dance Team](#), a martial arts demonstration, music, dance, visual arts and a variety of interactive booths for kids. This event is free and open to audiences of all ages! ***This is an open air event and dress warm for the weather and masks are required to attend.*** Wishing New Year happiness to all!

**Accepting Applications for
2022 Sammamish Arts Grant Program**

Supporting projects and programs that celebrate Sammamish's creative and cultural heritage, invite mutual respect for differing beliefs and values and enrich humanity.

SAMMAMISH
Arts
COMMISSION

Arts Commission is accepting applications for 2022 Arts Grant Program! The Arts Grant Program provides funding for organizations, individuals, and youth to deliver exemplary projects in arts education, dance, design, folk and traditional arts, literary arts, media arts, musical theater, multidisciplinary works, theater, visual arts, and all other forms of artwork for the citizens of Sammamish. *Learn more about the Arts Grant Program and application process by clicking on the image!*

Want to perform at a Sammamish Event?



Are you a live entertainer or part of a band looking to perform at a Sammamish event? Click on the image to learn more about how to submit a sample of your music or talent offering for consideration. Submissions received through Monday, January 31 at 11:59pm will be considered for Spring, Summer, and Fall of 2022.



Animal Explorers

The animals living in our backyards or in our towns are very different from the animals in other parts of the world. While some animals have adapted to live in freezing temperatures, others have adapted to live in extremely hot and dry environments. In Snapology's Animal Explorers class, students will learn where animals live and why an animal's habitat is important for survival. Through stories, games, and building animals with DUPLO® blocks, your little learner will be busy exploring biomes of the world while gaining critical social and developmental skills without even realizing it!

Age: 3 - 4
Date: Weekly Thursdays from 2/24/2022 to 3/31/2022
Time: 9:30am -10:30 am
Location: City of Sammamish - Lodge at Beaver Lake Park
25201 SE 24th St, Sammamish
Cost: \$130
Registration: <https://tinyurl.com/SnapSamm3>



Discovering Dinosaurs

How is a Tyrannosaurus Rex different from a Triceratops? Is it just in their physical characteristics or is it also what they ate and when they lived? In Discovering Dinosaurs, your little paleontologists will explore what dinosaurs ate and when they lived while constructing their very own dinosaur model out of DUPLO® blocks. Through stories, building, and games, your little learners will be busy exploring the prehistoric world while gaining critical social and developmental skills without even realizing it!

Age: 4 - 5
Date: Weekly Thursdays from 2/24/2022 to 3/31/2022
Time: 10:45 am -11:45 am
Location: City of Sammamish - Lodge at Beaver Lake Park
25201 SE 24th St, Sammamish
Registration: <https://tinyurl.com/SnapSamm4>
Cost: \$130



Space is limited!



TAKE A TRIP WITH COMMUNITY VAN

Get where you need to go for the cost of a Metro fare.

- Volunteers never have to pay for gas or bridge tolls.
- Community Van is taking safety precautions to limit the spread of COVID-19.
- Trips can be up to two hours away.

Learn more: <https://connect.sammamish.us/mobility-hub>

Community Van is a flexible rideshare option that provides Sammamish residents with a new way to use public transportation by offering trips to local destinations in and outside Sammamish (up to 2 hours away). Community Van accommodates trips throughout the day, evening, and weekends. Trips can be a whatever you need, such as going to a play or concert with friends or going to the

grocery store every week with a group. Community Vans are driven by volunteer drivers who are screened and approved through King County Metro's Commuter Van program. Riders pay a standard metro fare for a round trip while the volunteer driver can ride for free.

Currently, we are seeking volunteer drivers to fulfill the volume of ride requests coming in from the community! Support your neighbors, your community and help the environment by becoming a Community Van volunteer driver. You can choose which trips you drive and the frequency. If you are interested in volunteering, please email communityvan@sammamish.us or call (425) 295-0646.

To learn more please visit the City's [Mobility Hub!](#)



Know before you go. Schedules may change due to weather and/or equipment availability.

For emergency road repairs due to recent weather events, please visit the City's [Weather Events News](#) page for updates.

Road Projects for the Week of January 8-14, 2021

Community Bulletins



Sammamish Scout troops will be recycling Christmas trees on Saturday, January 8, 2022, marking the 37th year of their primary fundraising event. Trees will be picked up curbside starting at 8am. For more information and to learn how to make a donation, please visit <http://www.ScoutTreeDrive.org>.



This week from the [Snoqualmie Tribe Ancestral Lands Movement](#):

Happy New Year to all our supporters from everyone here at the Snoqualmie Tribe Ancestral Lands Movement. This outreach effort has really grown since we first launched this summer, and we are excited to see what 2022 brings. We are so appreciative of the support from local businesses, citizens, and

governments who see the importance of the Snoqualmie Tribe's input and connection to these lands, and the work we all have to do to help protect, respect and restore our ancestral lands. Thank you again for all your support helping amplify our message making the Snoqualmie Ancestral Lands Movement what it is today, as we begin an all new year! 🎉



Eastside Fire & Rescue Chief Jeff Clark will be joining Sammamish Seniors on Wednesday, January 12, 11am. He'll let us know what's happening with Eastside Fire & Rescue and what's ahead. He'll also be available for your questions.

Please email sammamishseniors@gmail.com for the Zoom link.

Everyone 16+ who is fully vaccinated is now eligible for a COVID-19 booster shot.

Everyone age 16-17 should get a booster dose of the Pfizer COVID-19 vaccine if at least six months have passed since receiving their second dose of Pfizer.



Everyone age 18 and older should get a booster dose of Pfizer, Moderna, or Johnson & Johnson (J&J) vaccine if it has been:

- 6 months since their second dose of Pfizer or Moderna
- 2 months since one dose of J&J

To schedule a COVID-19 vaccine booster, please click on the image!



Need to get tested for COVID-19? You can find out how by clicking on the image.



Are you noticing school anxiety or low motivation in your child or teen? CrossPath Counseling offers free, same week assessment and referral services to help you connect with a specialist provider in the area.

Email cpc@crosspathcounseling.com for more information.

SHARE

City of Sammamish
www.sammamish.us
(425) 295-0500
communications@sammamish.us

STAY CONNECTED:

[Visit us on Facebook](#) [Visit us on Twitter](#) [Visit us on YouTube](#) [Visit us on Flickr](#)

Change your email subscriptions or unsubscribe from eNews at any time on your [Subscriber Preferences Page](#) - use your email address to log in. If you have questions or issues with the subscription service, contact subscriberhelp.govdelivery.com

This email was sent to Email Address using GovDelivery Communications Cloud on behalf of: City of Sammamish Washington · 801 228th Ave SE · Sammamish WA 98075 · 425-295-0500

From: City of Sammamish <sammamish@service.govdelivery.com>



Subject: City News, Events & Updates: Your weekly eNews from the City of Sammamish

King County Flood Warning in Effect

masthead [<https://www.sammamish.us/>]

calendar [<https://www.sammamish.us/news-events/city-event-calendar/>]

January 11, 2022 | City Council Study Session [<https://www.sammamish.us/event?id=58590>]

January 12, 2022 | Parks and Recreation Commission Meeting [<https://www.sammamish.us/event?id=58531>]

news [<https://www.sammamish.us/news-events/current-news/>]

Flood Warning in Effect [https://connect.sammamish.us/weather-events/news_feed/flood-warning-in-effect]

First Sammamish City Council Meeting of 2022 [<https://www.sammamish.us/news-events/current-news?id=58714>]

Update on Republic Services, Snow and Ice Operations, and City Parks from City of Sammamish's Public Works [<https://www.sammamish.us/news-events/current-news?id=58702>]

Winter Weather Updates and Resources [<https://www.sammamish.us/news-events/current-news?id=58686>]

Department of Health updates isolation and quarantine guidance to align with CDC recommendation [https://connect.sammamish.us/covid-19-updates/news_feed/department-of-health-updates-isolation-and-quarantine-guidance-to-align-with-cdc-recommendation]

King County Growth Management Council to revisit Sammamish's Housing Units Growth Target [<https://www.sammamish.us/news-events/current-news?id=58556>]

Four-month closure of westbound SR 520 on-ramp from Redmond Way/SR 202 starting in February 2022 [<https://content.govdelivery.com/accounts/WASOUND/bulletins/2ffbcb>] [<https://content.govdelivery.com/accounts/WASOUND/bulletins/2ffbcb>] [<https://www.sammamish.us/news-events/current-news?id=58516>]

Sammamish City Hall Re-Opening Plan [<https://www.sammamish.us/news-events/current-news?id=57997>]

To book the "Community Van" or "Community Ride", please visit Connect Sammamish's Mobility Hub [<https://connect.sammamish.us/mobility-hub>]

For COVID-19 updates, visit COVID-19 information hub [<https://connect.sammamish.us/covid-19-updates>]

For weather-related events and "Wildfire Awareness, Prevention and Safety Tips", visit Weather Event

News and Updates [<https://connect.sammamish.us/weather-events>]

flood [https://connect.sammamish.us/weather-events/news_feed/flood-warning-in-effect]

There is a Flood Warning in effect for all of King County until Saturday, January 8. Reports of water over the roadway will be posted to the City's Weather Events News [<https://connect.sammamish.us/weather-events>] page, which you can access by clicking on the image.

volunteers [<https://www.sammamish.us/news-events/current-news?id=58729>]

Volunteerism is ingrained in our community. We appreciate the tremendous work our community volunteers do for our City. Join us in honoring Sammamish's 2021 Volunteers of the Year Joyce Bottenberg and Steve Marple 🙌🙌🙌🙌🙌

"Keep reading about their lives of volunteerism by clicking on the image!"

volunteer [https://sammamish.galaxydigital.com/need/detail/?need_id=650778]

*Join Master Stewards from the Washington Native Plant Society [<http://www.wnps.org/>] and the City this MLK national day of service to help remove invasive species and mulch at East Sammamish Park. Give back to your community, learn about native plants and enhance wildlife habitat! *

This project is perfect for students looking to complete community service hours for school. Water, snacks, gloves and tools will be provided. Please dress appropriately for weather, wear long sleeves/pants and closed-toed shoes. If the weather report predicts rain bring along a rain coat.

Masks are required to wear when on site and working. Social distancing will be enforced while working.

"*Must register and sign agreement online. No walk ups and only limited number of volunteers at a time is allowed. To register, please click on the image!*"

polar plunge [<https://impact.sowa.org/team/397223>]

❁ *Sammamish Police Department is participating in the Polar Plunge to raise funds and awareness for Special Olympics Washington!* ❁

This is a great fundraising event in support of more than 19,500 Special Olympics Washington participants. This year, we're facing off in a friendly East vs. West competition to see which side of the state can raise the most funds.

"Show your support by clicking on the image!"

lunar new year [<https://sammamish.us/parks-recreation-facilities/special-events/sammamish-lunar-new-year-celebration-2022/>]

Join us in celebrating the Year of the Tiger, featuring the diversely talented international community of Sammamish and activities centered around Asian culture and ceremonial traditions. Event highlights include a vibrant performance by the International Lion Dance Team [<https://www.facebook.com/International-Lion-Dance-Team-184014927546/>], a martial arts demonstration, music, dance, visual arts and a variety of interactive booths for kids. This event is free and open to audiences of all ages! "*This is an open air event and dress warm for the weather and masks are required to attend*". Wishing New Year happiness to all!

arts grant [<https://sammamish.us/government/commissions-boards/arts-commission/grants/>]

*Arts Commission is accepting applications for 2022 Arts Grant Program! *The Arts Grant Program provides funding for organizations, individuals, and youth to deliver exemplary projects in arts education, dance, design, folk and traditional arts, literary arts, media arts, musical theater, multidisciplinary works, theater, visual arts, and all other forms of artwork for the citizens of Sammamish. "Learn more about the Arts Grant Program and application process by clicking on the image!"

perform [<https://form.jotform.com/200167537578159>]

*Are you a live entertainer or part of a band looking to perform at a Sammamish event? *Click on the image to learn more about how to submit a sample of your music or talent offering for consideration. Submissions received through Monday, January 31 at 11:59pm will be considered for Spring, Summer, and Fall of 2022.

STEAM Feb

van [<https://connect.sammamish.us/mobility-hub>]

*Community Van is a flexible rideshare option that provides Sammamish residents with a new way to use public transportation by offering trips to local destinations in and outside Sammamish (up to 2 hours away). * Community Van accommodates trips throughout the day, evening, and weekends. Trips can be a whatever you need, such as going to a play or concert with friends or going to the grocery store every week with a group. Community Vans are driven by volunteer drivers who are screened and approved through King County Metro's Commuter Van program. Riders pay a standard metro fare for a round trip while the volunteer driver can ride for free.

*Currently, we are seeking volunteer drivers to fulfill the volume of ride requests coming in from the community! *Support your neighbors, your community and help the environment by becoming a Community Van volunteer driver. You can choose which trips you drive and the frequency. If you are interested in volunteering, please email communityvan@sammamish.us or call (425) 295-0646.

"To learn more please visit the City's *Mobility Hub [<https://connect.sammamish.us/mobility-hub>]*!"

cone [<https://connect.sammamish.us/cone-zone>]

"*Know before you go. *""Schedules may change due to weather and/or equipment availability."

For emergency road repairs due to recent weather events, please visit the City's Weather Events News [<https://connect.sammamish.us/weather-events>] page for updates.

Road Projects for the Week of January 8-14, 2021 [https://connect.sammamish.us/cone-zone/news_feed/road-projects-for-the-week-of-january-8-14]

bulletin

boy scouts [<https://scouttreedrive.org/index.php/info-for-press/press-release>]

Sammamish Scout troops will be recycling Christmas trees on Saturday, January 8, 2022, marking the 37th year of their primary fundraising event. Trees will be picked up curbside starting at 8am. For more information and to learn how to make a donation, please visit <http://www.ScoutTreeDrive.org>.

tribe [<https://www.facebook.com/SnoqualmieTribeAncestralLandsMovement>]

*This*** week from the Snoqualmie Tribe Ancestral Lands Movement [<https://www.facebook.com/SnoqualmieTribeAncestralLandsMovement>]:*

Happy New Year to all our supporters from everyone here at the Snoqualmie Tribe Ancestral Lands Movement. This outreach effort has really grown since we first launched this summer, and we are excited to see what 2022 brings. We are so appreciative of the support from local businesses, citizens, and governments who see the importance of the Snoqualmie Tribe's input and connection to these lands, and the work we all have to do to help protect, respect and restore our ancestral lands. Thank you again for all your support helping amplify our message making the Snoqualmie Ancestral Lands Movement what it is today, as we begin an all new year! 🎉

seniors [<https://www.facebook.com/Sammamish-Seniors-104786961055819>]

Eastside Fire & Rescue Chief Jeff Clark will be joining Sammamish Seniors on Wednesday, January 12, 11am. He'll let us know what's happening with Eastside Fire & Rescue and what's ahead. He'll also be available for your questions.

"Please email sammamishseniors@gmail.com for the Zoom link."

booster [<https://vaccinelocator.doh.wa.gov/>]

Everyone age 16-17 should get a booster dose of the Pfizer COVID-19 vaccine if at least six months have passed since receiving their second dose of Pfizer.

Everyone age 18 and older should get a booster dose of Pfizer, Moderna, or Johnson & Johnson (J&J)

vaccine if it has been:

- 6 months since their second dose of Pfizer or Moderna
- 2 months since one dose of J&J

"To schedule a COVID-19 vaccine booster, please click on the image!"

testing [<https://kingcounty.gov/depts/health/covid-19/testing.aspx>]

*Need to get tested for COVID-19? *"You can find out how by clicking on the image."

crosspath [<http://www.crosspathcounseling.com/>]

*Are you noticing school anxiety or low motivation in your child or teen? *CrossPath Counseling offers free, same week assessment and referral services to help you connect with a specialist provider in the area.

Email cpc@crosspathcounseling.com for more information.

Bookmark and Share [<https://content.govdelivery.com/accounts/WASAMMAM/bulletins/3049012?reqfrom=share>]

City of Sammamish
www.sammamish.us
(425) 295-0500
communications@sammamish.us

STAY CONNECTED: Visit us on Facebook [<https://www.facebook.com/CityofSammamishWA>] Visit us on Twitter [<https://twitter.com/CityofSammamish>] Visit us on YouTube [<https://www.youtube.com/c/Sammamish>] Visit us on Flickr [<https://www.instagram.com/cityofsammamish/>]

Change your email subscriptions or unsubscribe from eNews at any time on your Subscriber Preferences Page [<https://public.govdelivery.com/accounts/WASAMMAM/subscriber/edit?preferences=true#tab1>] - use your email address to log in. If you have questions or issues with the subscription service, contact subscriberhelp.govdelivery.com [<https://subscriberhelp.govdelivery.com/>]

This email was sent to Email Address using GovDelivery Communications Cloud on behalf of: City of Sammamish Washington · 801 228th Ave SE · Sammamish, WA 98075 · 425-295-0500 GovDelivery logo [<https://subscriberhelp.granicus.com/>]